

# Lofoten

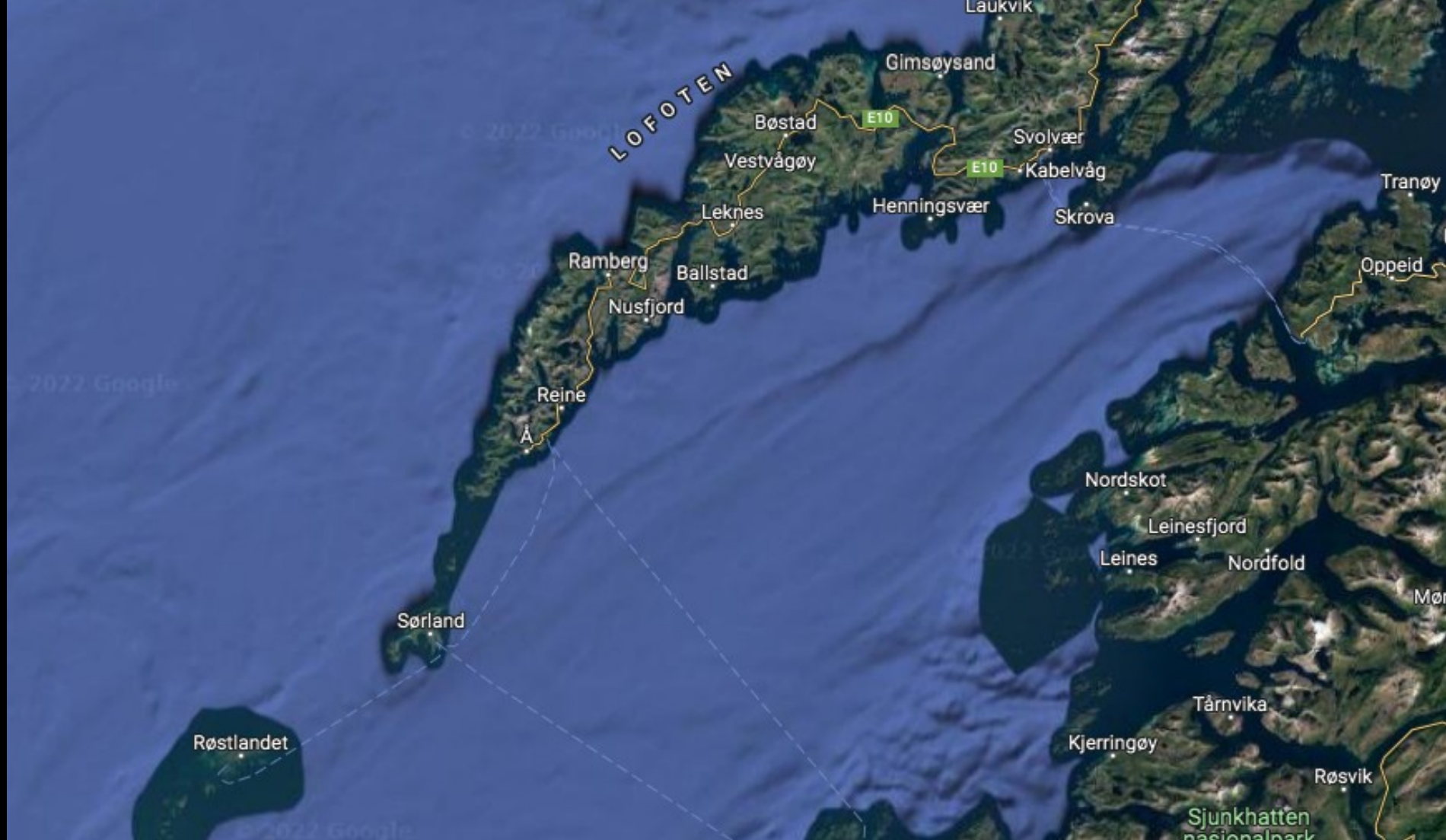
Europe - Norway

Teaching the Bahá'í Faith

Bahá'í Geography - Lofoten

# Lofoten Archipelago

Lofoten is a mountainous archipelago in the north of Norway above the Arctic Circle, with an area of 1,227 sq km. It has two towns, Svolvær and Leknes, and a population of 24,500. Cod fishing is a traditional industry, and tourism is now important. Road bridges connect the islands and the mainland.



Lofoten Archipelago, Norway



Lofoten Islands



Lofoten Islands



Lofoten Islands



Lofoten Islands



# Lofoten Islands

© Gregory C. Dahl





# Lofoten Islands

© Gregory C. Dahl



# Lofoten Islands

© Gregory C. Dahl



# Lofoten Islands

© Gregory C. Dahl



# Lofoten Islands

© Gregory C. Dahl



Lofoten Islands – midnight sun

© Gregory C. Dahl

# Knights of Bahá'u'lláh

Loyce Lawrence (1905-1968) pioneered to the Lofoten Islands with Mildred Clark in August 1953. A nurse and widow from America. Loyce attended the Intercontinental Teaching Conferences in New Delhi and Stockholm, where she offered to go to the Lofoten Islands with fellow American Mildred Clark.



Loyce Lawrence and Mildred Clarke

# Knights of Bahá'u'lláh

Loyce had planned to go to a warm tropical island and did not realize that Lofoten was north of the Arctic Circle in Norway, but she stood by her commitment. She returned to America to prepare, bought a new car, and arrived with Mildred in Svolver on 28 August 1953. Mildred, who had already pioneered to other countries, remained in Svolver for ten years before going on to Trondheim and then Finland, where she passed away in 1967.



# Loyce Lawrence

Most of the people in the town thought Loyce was just another American tourist, but then became suspicious, thinking she might be a CIA spy. After several years, she and Mildred were able to raise up the first Local Spiritual Assembly. Loyce attracted the hearts of the people of the island through her magnetic personality and her sincere love for them.

Loyce  
Lawrence  
(left rear)  
and friends  
1966



# Loyce Lawrence

She associated with both the upper classes and the common people and people loved and respected her; she radiated love and spirituality in whatever gathering she entered. Loyce entertained hundreds of people with warm hospitality and love at her flat and taught the Faith with both words and example. Many souls embraced the Faith while she pioneered there.

Loyce Lawrence  
and friends  
1966



© Gregory C. Dahl

# Loyce Lawrence

In 1966, Loyce was elected to the National Spiritual Assembly. In 1968 she became ill and was hospitalized in Trondheim, passing away on 28 December 1968. She left a cabin to the Bahá'ís, who used it as a local centre for a number of years.